



**NORTH CENTRAL  
PLANNING COUNCIL**

**2022 Year End  
Annual Report**

**Region III**

**Benson, Cavalier, Eddy, Ramsey,  
Rolette and Towner Counties**

**NCPC Mission**

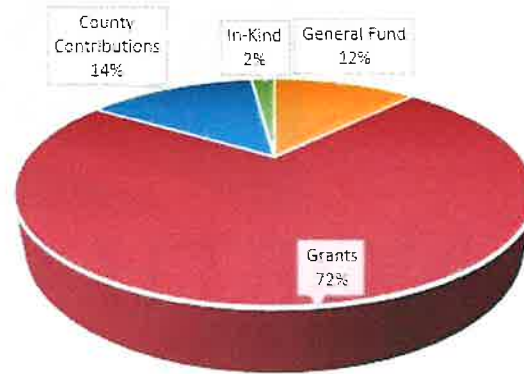
The North Central Planning Council exists in order to better coordinate and facilitate the provisions of economic and social opportunities to residents within the counties of Rolette, Towner, Cavalier, Benson, Ramsey, Eddy, Spirit Lake Indian Reservation and Turtle Mountain Indian Reservation for orderly development, improvement and conservation of the planning district and its people.

---

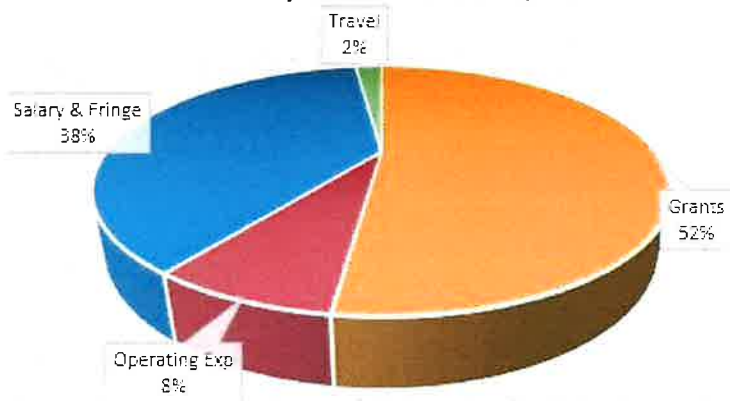
## Financial Report

The North Central Planning Council's business model is that of a nonprofit organization providing consultant type services which generates income from a number of sources including grants, grant management, loan program income, local program administration and county membership. The financials are year-end 2022 unaudited numbers.

**2022 Total Revenue, \$777,854**



**2022 Expenditures \$653,585**



### Cumulative Numbers

The table below reflects the numbers for both the 2022 year end and the cumulative impact since 1975. During the past year NCPC administered a wide variety of projects and programs. Some projects resulted in applications that were funded and some that were not funded but were provided technical assistance by NCPC staff. The numbers include all programs. The last two rows of the table are the NCPC impact and funds leveraged since 1975.

<b>By the numbers:</b>	
2022 total number of projects/clients assisted:	88
Total number of projects that were funded:	29
Total project funds awarded:	\$6,679,211
Total funds leveraged:	\$8,282,490
Jobs supported:	137
Number of projects administered:	25
Cumulative impact since 1975:	\$102,010,816
Cumulative other funds leveraged since 1975:	\$193,655,416

## Economic Development NCPC Revolving Loan Funds

### Year End 2022 Loan Portfolio Summary

The NCPC Revolving Loan Fund (RLF) provides participation loan funds to Region III entrepreneurs and business owners. The EDA CARES RLF grant ended in June 2022 and entered the revolving phase. The following table provides the 2022 loan information:

- ◆ 7 loans awarded
- ◆ \$760,000 in RLF loan funds
- ◆ \$5,308,000 funds leveraged
- ◆ 132 jobs supported
- ◆ 37 loans outstanding
- ◆ \$2,059,650 in loan receivables

#### RLF Cumulative Portfolio Summary Since Inception in 1985

Loans Awarded	RLF \$ Loaned	\$'s Leveraged	Jobs Created/ Retained
153	\$9,491,326	\$36,032,982	1,769

### EDA CARES Grant Funding

The Economic Development Administration awarded NCPC a grant in 2020 for recovery and resiliency planning in response to the COVID-19 disaster. The grant period ended in June of 2022. NCPC staff collaborated with the economic development offices in the Region to deliver the following scope of work:

- Created Housing and Labor Studies for all six counties
- Created Recovery/Resiliency plans for all six counties
- Created the Small Business COVID-19 Recovery and Resiliency Resource Kit
- Created the Comprehensive Plan Self-Assessment
- Created the American Rescue Plan Community Guide
- Created the Radically Rural Relocation Guide
- Provided Monthly Newsletters
- Created the Tourism Impact study
- Conducted online and paper surveys for each county
- Held multiple public forums in each County for public input

## Housing and Public Facilities

North Central Planning Council staff provides CDBG grant administration through contract with a city or county. The projects are awarded funds through the ND Department of Commerce. NCPC received the following contracts in 2022:

- City of Velva - was awarded CDBG funds of \$332,809 to construction a new master sanitary sewer lift station.
- City of Harvey - was awarded CDBG funds of \$175,000 for replacement of five outdated control panels for the sewer and water system located at the water treatment plant, water tower, two water wells and one sewer lift station.

Other CDBG projects from previous years that will continue in or be completed in 2023 are:

- Rolette County— Rolette County Historical Society is a 2020 project for the removal of architectural barriers at the museum in St. John.
- City of Leeds—Park Vue Apartments is a 2020 project for the removal of architectural barriers.
- City of Devils Lake— VFW Post 756 is a 2020 project for the removal of architectural barriers.
- City of Devils Lake—Creative Impressions is a Main St. CDLF project for exterior improvements to the building.
- City of Devils Lake—Diseth Holding, LLC is a Main St. CDLF project for improvements to the building.





# NORTH DAKOTA SMALL BUSINESS DEVELOPMENT CENTERS

*Your Ideas - Our Expertise - Your Success*

North Central Planning Council is host to the regional Small Business Development Center. The program, located in Devils Lake, is made available in Region III through an agreement with ND SBDC Lead Center and the state program grantee, the University of North Dakota.

Client Impacts	Devils Lake	State-wide
Capital Formation	\$4,370,000	\$103,941,626
Business Starts	4	99
Jobs Supported	64	653
Total Clients	62	1,611
Advising Hours	557	6,322

Clients by County	#
Benson County	3
Eddy County	4
Cavalier County	5
Ramsey County	24
Rolette County	12
Towner County	3
Nelson County	2
Dunn County	1
Stutsman County	1
Pierce County	1
Foster	1
Pembina	2
Ward County	1
Cass County	2
<b>Total</b>	<b>62</b>

Funding for the Devils Lake SBDC is provided through a SBA sub-award agreement and 1:1 matching funds are provided locally by Benson County JDA, Cavalier County JDA, Rolette County, Towner County, Forward Devils Lake, Eddy County, Dakota Business Lending, and NCPC. **The program is provided at no cost to the clients.**

The Devils Lake SBDC staff work with the economic development offices and financial institutions through-out the Region who refer their clients to the Devils Lake Center for project development, business plans, financial projections, and access to capital.



## Other Programs

### ND Region III Regional Workforce Impact Program (RWIP)

ND Region III was allocated up to \$1M to address workforce issues in the Region through the ND Department of Commerce. NCPC submitted an application and was awarded funding for the following two areas of work:

1. Funding to six daycare centers in the Region that were impacted by the COVID – 19 Disaster. The Centers received funding that will allow them to expand their facility or address safety or code issues.
2. The Mobile Career Exploration Classroom will utilize Virtual Reality videos to expose Jr. High and High School students to critical need and other careers that are available in the Region.

### CONAC REAP Zone (Center of North America Coalition Rural Economic Area Partnership Zone)



NCPC provides administrative services including monthly financial record keeping, reports, benchmark entry, organizing meetings, minutes, and loan servicing. Impacts for 2022 include:

- CONAC reviewed 6 benchmarks for funding or endorsement
- Capital impact of \$1,185,639.



### Benson County Job Development Authority

NCPC provides administration services and loan fund management through contract with the BCJDA. NCPC services include project development, monthly financial record keeping, marketing, reports, organizing meetings, minutes, and loan servicing.

BCJDA assisted one project for a lake resort that provided 3 jobs. All projects funded by BCJDA must reside inside Benson County.

### Housing Preservation Project for Prairie View Public Housing

NCPC was awarded grant funds of \$150,000 for housing preservation through USDA Rural Development. The identified project is the Rolette County Housing Authority property, Prairie View housing in Rolette, ND. With \$20,000 in local funds, total project funds of \$170,000 will be used to replace windows and doors in the 38 unit complex. The renovations will take place in 2023.

## Staff

**Sandra Shively, Executive Director**

**Kristen Jacobson, Financial Officer**

**Ashley Louw, Grant Coordinator & SBDC Advisor**

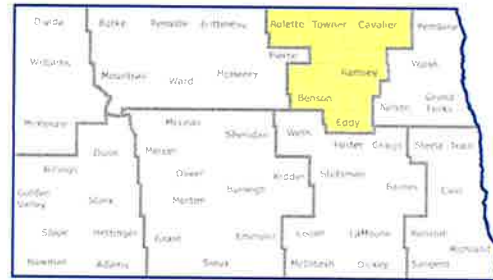
## Board of Directors

### Officers

**Rob Hach - Chairman**

**Allan Nord- Vice-Chairman**

**Mike Connor - Secretary/Treas.**



### Benson County

**Glenn Hoffmann**

**Allan Nord**

**Doris Griffin**

### Eddy County

**Neal Rud**

**Ryan Hager**

**Robert Hanson**

### Cavalier County

**Greg Goodman**

**Roxanne Hoffarth**

### Ramsey County

**Mike Connor**

**Rob Hach**

**Lisa Diseth**

### Rolette County

**Merle Boucher**

**Scott Mitchell**

**Nathan Neameyer**

### Towner County

**Matt Oderman**

**Todd Klingenberg**

**Joseph Parker**

### Turtle Mountain Band of Chippewa

**Anita Blue**

### Spirit Lake Tribe

**Open**

### Financial/Private Business

**Lisa Mosser**

### Local Employment Rep

**Randi Anfinson**

### Local Economic Development Corporations

**Elsie Magnus**

### Member at Large

**Harold "Ole" Nowatzki**



**NORTH CENTRAL**

PLANNING COUNCIL

PO Box 651

417 5th St. NE

Devils Lake, ND 58301